

**STUDENT HANDBOOK
FOR THE COLUMBIA PUBLIC
SECONDARY SCHOOLS**



“Teaming Together For Excellence”

**COLUMBIA CAREER CENTER
FREDERICK DOUGLASS HIGH SCHOOL
DAVID H. HICKMAN HIGH SCHOOL
ROCK BRIDGE HIGH SCHOOL**

**JEFFERSON JUNIOR HIGH SCHOOL
OAKLAND JUNIOR HIGH SCHOOL
WEST JUNIOR HIGH SCHOOL**

**GENTRY MIDDLE SCHOOL
LANGE MIDDLE SCHOOL
SMITHTON MIDDLE SCHOOL**



Smithton Colors and Mascot

The school colors: Black and Gold

The school mascot: Wildcats

TABLE OF CONTENTS

Letter from Administration

School Map

Smithton Faculty and Staff

General Information

District Secondary School Pages

Instructional Information

Behavioral Guidelines

2010-2011 School & PTSA Calendar

History of Smithton Township

WELCOME TO SMITHTON MIDDLE SCHOOL

3600 West Worley
Columbia, Missouri 65203
(573) 214-3260 Fax (573) 214-3261
Office Hours: 7:15 am – 4:00 pm
School Hours: 8:00 am – 3:00 pm

WELCOME TO SMITHTON MIDDLE SCHOOL

3600 West Worley
Columbia, Missouri 65203
(573) 214-3260 Fax (573) 214-3261
Office Hours: 7:15 am – 4:00 pm
School Hours: 8:00 am – 3:00 pm

Dear Smithton Students and Parents,

Welcome to Smithton Middle School, Home of the Wildcats! We are excited and look forward to working with you during the 2010-2011 school year. Our motto is “Success for all students with no exceptions”. We want to work together with you to accomplish this goal, through a unified focus between school and home. We invite parents to stay involved and partner with us to help ensure your child has a successful school year.

We would like to extend both a congratulations and a welcome to our 6th graders on their transition into this new learning community, and also to our 7th graders. We hope you find Smithton to be exciting and challenging, along with a place to continue your education in both a fun and focused manner. We want students to become involved outside of the classroom in one of the many extracurricular clubs or activities offered. This will be a great way to meet new friends and enhance your experience in middle school.

While we will work with you to assist you in succeeding to the highest degree possible, we plan to help you to develop into successful young men and women. At Smithton, we value the following behavioral standards, which can be applied to you as lifelong learners. Smithton teachers and staff will work with students to reach these expectations, known as the **“Wildcat GRRRR”**.

Smithton Students:

- **G**ive **R**espect to themselves, others, and the learning environment,
- are **R**eady to Learn,
- take **R**esponsibility,
- **R**each for the stars!

We look forward to working with each and every one of you as this year promises to be an outstanding one!

Jean Selby

Jean Selby
Principal

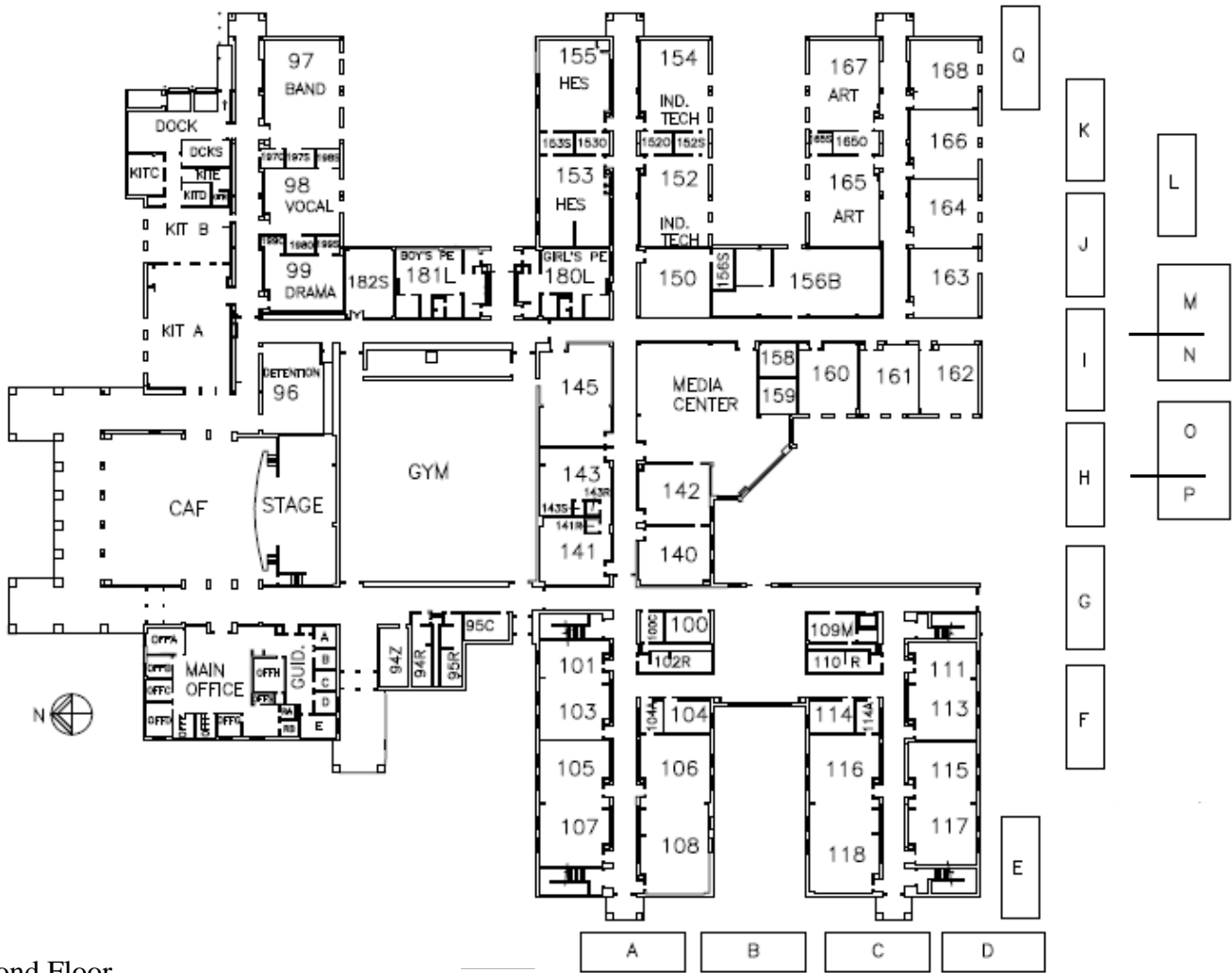
Darlene Grant

Darlene Grant
Assistant Principal

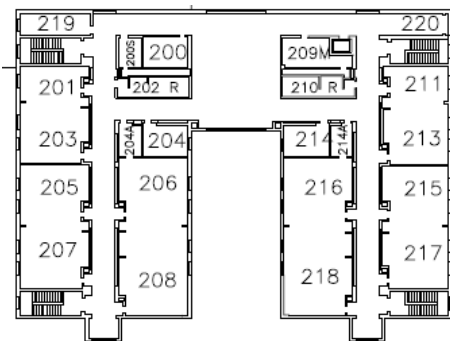
Debbie Greene

Debbie Greene
Assistant Principal

MAP OF SMITHTON MIDDLE SCHOOL



Second Floor



Student Pick-Up and Drop Off Safety and Courtesy

Out of courtesy to Others, and more importantly, safety for all our students, please adhere to the following directions when dropping off and/or picking up your child before or after school

DO...

Enter the Parking lot using the driveway closest to Silvey Lane marked Entrance Only

Proceed in a clockwise direction around the outer edge of the parking lot on the one way driveway toward the school.

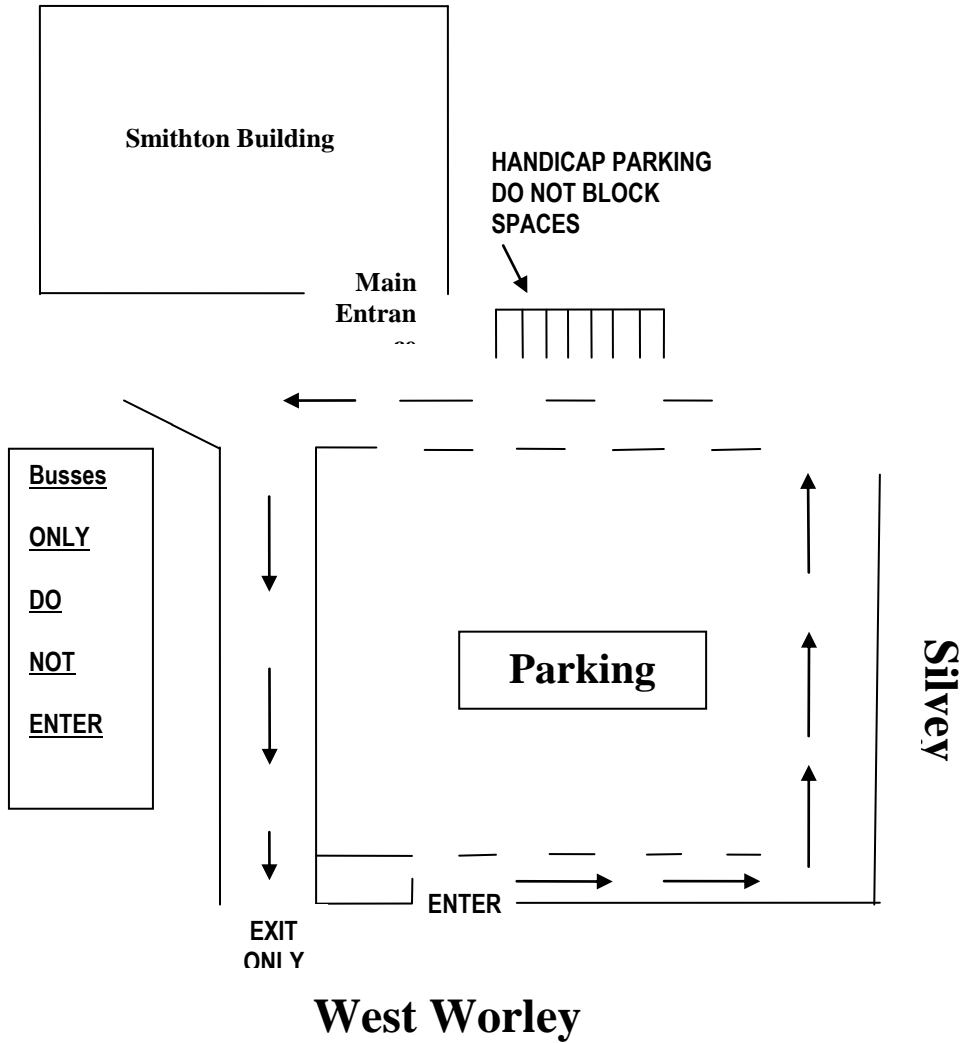
Follow this route until you are as far along the sidewalk as possible before you let your child out.

Let your child out on the sidewalk

Park in the parking lot and not against the curb if you must enter the building.

Use the correct driveway. The West driveway is an **ENTRANCE ONLY**, the east is **EXIT ONLY**.

Allow plenty of time (5 or 10 minutes so that you and your student arrive to school on time.



SMITHTON FACULTY & STAFF 2010-2011

Ms. Jean Selby, Principal
Darlene Grant, Assistant Principal
Deborah Greene, Assistant Principal
Brenda McGaffic, Secretary to Principal
Stacy Cheslock, Attendance Secretary
Trish Delcourt, ECA Secretary

Cara Ross, Physical Education
Steve Kissane, Physical Education
Ashley Malorin, Resource Room
Sandya Sharma, Speech Language
Randi Schuricht, SSKIP
Kaye Miller, Orchestra

Jessica Nicewarner, 6th Grade Counselor
Dylan Irwin, 7th Grade Counselor
Trudi Beck, Outreach Counselor
Valerie Reed, Registrar/Guidance Secretary
Mary Beth Steckel, School Nurse
Paula Griffin, Secretary to Nurse

Lynn Hardy, Home School Communicator
Kerry Townsend, Media Specialist
Kathy Lee, Media Clerk
Cynthia Wetz, Speech Language
Connie Hayward, EEE Teacher

6th Grade Encore

Art – Amy Company
Vocal Music- Melissa Straw
Computer Concepts- DeeDee Myshrall
Literacy Support – Susan Jones
FACS- Jill Walker
Industrial Technology- Rodney Swope
Health- Maria Cox
Instrumental Music- Bridgett Randolph, Brooksie Collins

7th Grade Electives

Art- Rebecca Stuart Drama- Amy Drtina
Computers- Charles Hoover Industrial Technology - John Steitz
Vocal Music- Melissa Straw FACS- Laura McAllister
French- Melinda Henry Spanish- Katy Perez
Aspiring Scholars-Dee Campbell Carter
Instrumental Music- Bridgett Randolph, Brooksie Collins
Literacy Support – Pam Campbell

Team 71

Angela Wagner
Pat Cleeton
Karen Smith
Joan Jouriles
Leslye McCarty
Seth Trotter

Team 61

Susan Fox
Jeff Hagan
Stephanie Wightman
Josh Smith
Denise Skouby
Holly Tatlow

Team 72

Mary Allee
Sue Burns
Amy Duncan
Lena Sheets
Michele Winter
Kari Schuster

Team 62

Erin Eastin
Carol Burlis
Victoria Anderson
Gretchen Rohrs
Rebecca Stock
Sue Vandeloecht
Brian York

Team 73

Julie Kammerich
Alisha Long
Christine Reynolds
Carley Heitz
Julia Alexander

Team 63

Robin Elletson
Lina Wahid
Lametria Pegg
Meera Sood
Deb Peters
Denise Ferguson

Team 74

Nicole Erwin
Jonathon Thornhill
Jamie Scholten
Lynn Hagen
Nancy Brunner

GENERAL INFORMATION ABOUT SMITHTON

BUSES

First Student Bus Company, 474-9473, provides bus service as arranged by Columbia Public Schools. First Student drivers are responsible for maintaining discipline and safety on the buses at all times. To that effect, the bus company has put video recorders on buses to monitor activity. If there are behavior problems, the driver notifies Smithton. Riding school buses is a privilege that can be revoked if students do not behave appropriately. Staff members supervise bus loading and unloading. Students are dismissed from buses at 7:30 am and should go directly to the cafeteria or gym. Upon dismissal from school students should line up by bus number and board their buses as soon as it arrives. In order to ride a different bus on a specific day, students must present a signed note from their parent to the office for administrator approval/signature. **At least one school day of advanced notice will be needed to ride a different bus on early release days. Please refer to the colored page section of this handbook for student rights and responsibilities in regards to bus transportation.** The Home School Communicator will contact parents with information about bus tickets either by phone and/or by mail.

CITY BUS

Students riding the city bus will enter and leave the building through the exit nearest the main office. Parents need to notify the main office by note or phone if they want their child to ride the city bus. Students riding the city bus must go to their designated areas upon arrival and leave the building at dismissal to go to their stop. The students will wait at the bus stop closest to school.

DROP-OFFS / PICK-UPS / WALKERS

Arrival at school should be no earlier than 7:30 a.m. Be aware that the northeast entrance and driveway is reserved for **school buses only**. All others should use the main office side of the building for entrance and exit. Parents, please follow the arrows and signs in the parking lot. **Students should be picked up by 3:15 p.m.** unless involved in supervised after school activities.

BICYCLES/SKATEBOARDS/ROLLERBLADES

Students who ride their bicycles to school should walk their bicycles while on school property. Skateboarding and rollerblading are not allowed on school property during the school year except during approved activities. If students bring their skateboards and rollerblades to school, they should be checked into the office upon arrival at school. Put your name on your skateboard or rollerblades. **Office personnel cannot guarantee the security of these items.**

BEFORE SCHOOL (7:30 – 7:55) / AFTER SCHOOL (3:00 – 3:15)

All students need to go immediately to their designated location (cafeteria, gym, teacher classroom with pass, media center) when entering the building before school. Students are not allowed to be at lockers until given directions by teachers. Once students enter the gym before school, they stay there until dismissed. Students should use the restroom before entering the gym. Students involved in an after-school activity under the direct supervision of a teacher or sponsor may remain in the building after 3:15 p.m. Students should be picked up as soon as possible after the scheduled activity.

BREAKFAST / LUNCH PROGRAM

Breakfast and lunch may be purchased on a daily basis. Food purchased in the cafeteria will be on a cash basis only. Checks may be deposited into student accounts. Both hot and sack lunches are available daily. A la Carte items are available and may be purchased with cash or account funds if so designated by parent or guardian. All students will need to enter their ID number into the register computer. **Free and reduced price breakfast or lunch applications must be approved each year.** Applications are available in the main office. Breakfast is served from 7:30 a.m. to 7:45 a.m. in the cafeteria. Lunch schedules will vary with individual teams.

In order to maintain a clean and pleasant dining area, students are asked to please keep the following GRRRRR Expectations in mind:

1. Line up quietly in hallway and wait for instructions from an adult to enter the kitchen. **Only one trip through the kitchen.**
2. Have your ID number ready to punch in the computer keypad.
3. All items must be on the tray or clearly visible to the cashier.
4. Only eight students should be seated at a table at one time.
5. Clean up after yourself (table top and floor).
6. Remain seated in your original location.
7. Raise your hand and wait to be acknowledged by a cafeteria supervisor if you need to leave your seat for any reason.
8. Use a conversational tone in the cafeteria while eating.
9. All food/drinks, including flavored water must stay in the cafeteria with the exception of plain bottled water.
10. Only purchase food from the cafeteria during lunch.
11. Buy food only for yourself. Refrain from accepting food you did not buy.
12. Students should refrain from borrowing money or loaning money to other students.

Failure to follow these GRRRRR Expectations will result in disciplinary action. **Lunch detentions are cumulative and limited to peanut butter and jelly sack lunch or a lunch brought from home, which does not include candy or soda.**

SMITHTON IS A CHEWING GUM AND SUNFLOWER SEED FREE SCHOOL.

TELEPHONES

There is a phone in the main office for student use. This phone may be used before school, during lunch, or after school for emergency purposes. Students must have a pass from a teacher to show to office personnel in order to use the phone at any other time. Students should never use the hallway pay phone at any time during school hours. In order to protect learning time, parent phone calls will not be put through to students during class. Classroom phones may be used at teacher discretion for purposes other than to notify parents that a student is ill. Students who are ill should report to the nurse's office. A parent will be contacted by the nurse or the nurse's secretary.

CELLULAR PHONES

Cell phones should be **placed in lockers** immediately upon arrival from 7:30 a.m. – 3:00 p.m. Phones that are seen in the building and/or ring during this time will be confiscated and turned in to an assistant principal. On the first offense a student may pick up the phone. Further offense will require a parent to pick up the phone. Students caught using a cell phone between 7:30 a.m. and 3:00 p.m. may be subject to disciplinary action. A parent/guardian will be required to pick up the phone during office hours from 7:15 a.m. – 4:00 p.m. **Neither the school, nor its representatives will be responsible for lost or stolen phones.**

ELECTRONIC DEVICES

Students should also refrain from bringing any other electronic devices that are a distraction to the learning environment such as electronic gaming devices, iPods and Mp3 players. Devices that are seen or heard during the hours of 7:30 a.m. – 3:00 p.m. will also be confiscated. A parent or guardian will then be required to pick up the device during office hours from 7:15 a.m. – 4:00 p.m. **Neither the school, nor its representatives will be responsible for any lost or stolen device.**

TARDIES TO SCHOOL

Students who arrive after 8:00 a.m. must sign in at the office before going to class. Parents/Guardians should phone or send a note explaining why the student was late. **Please refer to the colored pages in the student handbook for additional information concerning attendance. Students may be subject to disciplinary action when excessively tardy to school.**

TARDIES TO CLASS

Students who are tardy to class more than 3 times will be assigned a Teacher Assigned Detention. Excessive tardiness (6 or more times) will result in a referral to building administrators.

LOCKERS

Team teachers will assign lockers. Students will share a locker with another student of the same gender on the same team. Students are expected to keep their lockers clean and orderly. **Do not attach anything to the inside or outside of the locker.** If a student needs assistance in opening a lock, they should ask a team teacher for help. Combinations are not to be shared with anyone! **There is a \$5 fee for replacing a lost lock. Students should not bring locks from home and the school lock should never be taken off campus.** Students should never leave their lock open when unattended. **Please refer to the colored pages for additional information.**

DRESS GUIDELINES

Students are expected to dress in such a way that shows good taste and common sense. Some examples of clothing and other attire that are **NOT PERMITTED** include but are not limited to:

Top:

Bedroom clothing
Caps, hoods, and/or bandanas
Tube tops
Spaghetti strap tops or tanks with straps that measure less than 3 inches in width.
Halter-tops
Tops that expose: the midriff, bra straps, or excessive amounts of back or chest.
Sweatbands

Bottom:

Slippers
Shorts, skirts, dresses, skorts, etc. **These articles of clothing should extend past the bottom of the finger tips when hands are open and flat and arms are extended at the side, even when worn over leggings or shorts.**

Pants should not be worn in a sagging manner that shows underwear or requires the student to hold the pants up to keep them from falling.

Additional clothing/accessory guidelines.

Large purses. Only small purses with small handles will be permitted. These purses can be no larger than an 8 ½ x 11 sheet of paper.

Binders. While Binders are permitted in the classroom, binder straps create a safety hazard, therefore, students should either store the straps in their lockers or leave them at home.

Hair. Unnaturally colored hair and wild hairstyles are not permitted except on special days.

Clothing may not contain, profanity, alcohol, tobacco, drug or sexual content.

Back packs may be carried to school and then stored in the student's lockers.

Purses, clothing, and other attire should not be a distraction to the learning environment. Students who are dressed in a manner that is not consistent with the SMS Dress Guidelines will be asked to change. Any questions concerning these guidelines should be brought to the attention of school administration.

HOME SCHOOL COMMUNICATOR

The Home School Communicator works closely with parents, teachers, administrators, and students in developing better communication between home, school and the community. The Home School Communicator will be the main contact person via personal conversations when there is no telephone in the home.

SMITHTON ACTIVITIES

School sponsored activities are usually either at the start of the school day or right after school. Parents are responsible for rides when an activity is scheduled after school. Smithton staff will supervise activities. **Students must be in attendance for at least ½ day on the day of the event in order to participate.**

VISITORS

Parents are always welcome at Smithton. We ask that they sign in at the office and obtain a visitor's sticker when they arrive. Smithton's main function is education. Because of this and the crowding in our school, we regret that brothers and sisters, cousins, or other visitors from out of town will not be allowed to spend the day in school.

INSTRUCTIONAL INFORMATION ABOUT SMITHTON

TEAMS

Students are organized in teams of learning communities. The school day for students will generally be broken into three blocks of instructional time: core, encore/electives, and academic lab/PE.

CORE BLOCK

Each team of students will be served by a team of teachers who are responsible for district curriculum in the areas of reading, language arts, mathematics, science, social studies, and health. Each team includes a full-time special educator as well. This flexible instructional time will be collaboratively planned by the team of core teachers using integrated units when appropriate.

ENCORE/ELECTIVES BLOCK

The Encore block will provide students with an array of exploratory experiences. As in the core block, the encore block for 6th grade is flexible instruction time planned collaboratively by the encore team and integrated when appropriate. The encore rotation includes music, industrial technology, business education, art, family and consumer sciences, and health. **Encore grading is Pass/Fail.** Electives in the same content areas are offered for 7th grade students. Electives classes receive letter grades.

SMITHTON MIDDLE SCHOOL GRADING SCALE:

| | | |
|------------|------------|------------|
| A 100 – 94 | A- 93 – 90 | |
| B+ 89 – 87 | B 86 – 83 | B- 82 – 80 |
| C+ 79 – 77 | C 76 – 73 | C- 72 – 70 |
| D+ 69 – 67 | D 66 – 63 | D- 62 – 60 |
| F 0 – 59 | | |

EFFORT & CONDUCT SCALE:

| |
|---------------------|
| 1 Outstanding |
| 2 Above Average |
| 3 Average |
| 4 Needs Improvement |
| 5 Unsatisfactory |

ACADEMIC LAB / PHYSICAL EDUCATION BLOCK / CO-CURRICULAR ACTIVITIES

This block will provide students with a period of physical education for 45 minutes either on Monday/Wednesday or Tuesday/Thursday. **Physical Education is a pass/fail course based on 70% and above. All students are required to dress out in teacher-approved clothing and shoes. Failure to dress out repeatedly could result in consequences ranging from doing make up work to serving a Saturday Detention.** Academic Labs will meet on alternate days. These labs will be planned and directed by core teachers, providing additional time for enrichment or remediation.

CURRICULUM

Curriculum objectives are the same for the three middle schools for both 6th and 7th grade. All core and encore teams will cover the required objectives, but not necessarily at the same time or in an identical manner.

ELL (English Language Learner)

The English Language Learner program is designed to assist international students with their regular class work. For the beginning ELL student, work is given in basic skills to develop competence in reading, writing, listening and speaking English.

EEE (Gifted Program)

Smithton has a EEE teacher on staff that plans with the team teachers to meet the needs of gifted students. In addition to receiving enrichment on their team, these students are also pulled out to meet with the EEE teacher.

SPECIAL EDUCATION

A learning specialist is assigned to each core team. Special education students are supported using class-within-a-class and small group models.

SPEECH AND LANGUAGE

The purpose of this program is to provide remedial and instructional services for students who need help with communication skills. Therapy takes place on an individual or small group basis. Consultations with teachers and parents are emphasized. Please see the colored pages for additional information about Special Education.

MEDIA CENTER & COMPUTER LAB

Our media center is a world of information and knowledge. The media program is designed to empower students to effectively access, evaluate, and utilize information. Our program provides information resources and services that support and enrich the middle school curriculum. We also provide a wide selection of books for leisure reading and to cultivate a life-long appreciation of literature. We believe that the pursuit of knowledge can be fun and exciting, especially at the Smithton Media Center!

Hours:

The media center opens at 7:30 a.m. and closes at 3:15 p.m. Students who would like to use media center before school, must pick up a pass upon arrival at school. The computer lab is also open after school on Monday through Thursday from 3:00 p.m. to 5:00 p.m. Students may use the media center independently during the day with a teacher signed agenda or pass. Students will need to sign in at the circulation desk upon arrival and sign out when leaving the media center. The media center is for all Smithton students and staff, so please be considerate of others while you are there.

Circulation Policy:

Your student ID is also your library card. You will be required to use this card to check out books or other materials. Books may be checked out for 2 weeks. Reference books may be checked out for one school day or overnight. It is your responsibility to return material you check out on time. You may renew material you need to keep beyond the original due date.

Technology:

Smithton has many computers available in classrooms, the media center, and labs for student use. These computers may be used to search the media center catalog and resources on Smithton's network, encyclopedia and other information databases to which the district subscribes, and the Internet. Any student who misuses computers will be subject to disciplinary action. (For more information, the district policy for student computer use is available in the colored pages of this handbook)

Student Computer Use Guidelines:

- The use of any Columbia Public School computer is a privilege, not a right. This privilege will be revoked for any inappropriate computer behavior. Such behavior would include, but is not limited to, damaging computer or network equipment, deleting files on any share drive, and the use of obscene, abusive, or otherwise objectionable language or images in either public or private files or messages.
- All students must login to their own account on the Smithton network. They may not use anyone else's account or use a computer that is not logged in. If you have problems logging in or forget your password, see Mrs. Cox in the media center.
- Users may not impose themselves on others, broadcast network messages, access private files (even if those files are unprotected), attempt to break the security system, illegally copy software or use computer supplies frivolously.
- Students using the Internet are responsible for keeping all inappropriate files, or files that could damage the integrity of the network, from entering the school via the Internet.
- Hot Mail or other e-mail programs available on the Internet cannot be accessed from school computers.
- Students using programs with sound must keep the sound at a personal level (one that does not distract others) or provide their own headsets.
- Programs that are not owned by Smithton Middle School or the Columbia Public School District may not be installed on school computers.
- Students may not save on the C: drive of any computer. Work should be saved to the student's network folder or to a personal storage device.
- Students are encouraged to edit their work on the screen and limit printing to conserve paper and printer toner. Students must ask permission before printing.
- Printing
 - You must have permission to print
 - You may only print school assignments
 - You may not print multiple copies
 - You must check which printer you are printing to
- Chat rooms, Instant Messaging, E-mail, Napster, MP-3s, Scour Exchange, or similar programs are prohibited.
- Downloading is prohibited unless for a specific class assignment.
- Games are prohibited during school hours (8:00am-3:00pm).
- All settings on the computer should be maintained.

Before/After School Computer Lab Program:

- The Media Center Computer Lab (room 142) is open after school on varying days from 3:00pm to 5:00pm. This is not a tutoring program and although the supervisor may assist students with their work they will not be checking to ensure that students are working on specific assignments.
- Students who would like to stay after school should make arrangements (permission to stay after school, ride home, etc.) before they come to school. Students must be picked up by 5:00pm. Students will be able to use the phone to notify parents if they have finished and are ready to go home.

- Twenty-eight computers will be available on a first-come first-serve basis. Students with school related assignments have priority over students exploring the computer network, computer programs, or telecommunication options.
- All students must sign-in when they arrive and sign-out when they leave.
- Students must be considerate of others using the lab. Conversation, computer program noise, etc. must not be distracting or disturbing. Students playing musical CD's must provide their own headsets.
- All instructions from the lab supervisor must be followed.
- Students waiting for busses after school may not wait in the computer lab.
- Food or drink will be prohibited in the Computer Lab.
- All other computer use rules must be followed as listed above.

COMMUNICATION

Newsletters will be sent by each team regularly to communicate information and expectations for students. The PTSA newsletter contains an abundance of information about Smithton Middle School, including communication from Dr. Martin. It will be mailed home each month. Teams will communicate frequently using email, phone calls and other methods.

COUNSELING / GUIDANCE SERVICES

Students are encouraged to take advantage of the counseling services at SMS. School counselors, Jessica Nicewarner, Dylan Irwin, and Trudi Beck, are available to talk about those things that interest students and their parents or to assist students with peer and academic success. The guidance office is located within the main office.

PROBLEMS:

Do not try to solve all problems alone or assume that it's not important to anyone else. No problem is too small or too big. Talk to a counselor, a teacher, or administrator in the office. There are lots of adults at Smithton who care and want to help you!

CAREERS:

Career exploration is an integral theme of middle-level education. Career exploration and knowledge of career paths are organized through the guidance curriculum and emphasized in all areas of the middle school curriculum.

DAILY PHYSICAL ACTIVITY Teams may provide opportunities for physical activity in addition to physical education classes.

GUIDELINES FOR STUDENT BEHAVIOR: YOUR GUIDE FOR SUCCESS

The atmosphere at Smithton influences how you feel about learning. In order to maintain a pleasant, safe environment where learning takes place, it is important that we all work together.

Smithton Middle School values the following standards of behavior, which we call *Wildcat GRRRR*. Smithton students:

Give **R**espect to themselves, others, and the learning environment,
are **R**eady to learn,
take **R**esponsibility,
and **R**each for the stars.

Smithton students should also follow the Golden Rule, "Treat other people the way you want them to treat you." Our goal is to help students learn ways to successfully manage their behavior. Any behavior or choice that interferes with the growth and/or learning of Smithton students is not acceptable. The Smithton PBS matrix, while not inclusive, lists examples of expected behaviors. When students have difficulty following Wildcat GRRRR, they will be re-taught the expectation and allowed the opportunity to practice the correct behavior. Consequences may follow for subsequent infractions. Inappropriate behavior may lead to an office referral.

Consequences for Office Referrals:

Conference and Warning with Parent Contact
Detention Morning or after school (½ hour or more 7:30 – 8:00am or 3:00-3:30pm)
Lunch Detention (one or more)

Saturday Detention (West Jr.
Saturdays, 4 hours 8:00 am – 12 noon)
GRRRR Room (In School Suspension -partial
or whole day)

Smithton Middle School GRRRR Expectations

| Smithton Wildcats: | | All Settings/ Classrooms | Hallways | Cafeteria | Restrooms / Locker Rooms | Arrival/ Dismissal | Bus / Bus Zone | All School Events |
|--|--|--|--|---|--|---|--|---|
| Give Respect | To Self | <ul style="list-style-type: none"> following dress code keeping Smithton drug free practicing good hygiene | <ul style="list-style-type: none"> following “all settings” expectations | <ul style="list-style-type: none"> eating only the food you purchase or bring from home raising your hand to leave your seat | <ul style="list-style-type: none"> washing hands with soap and water before exiting picking up after self | <ul style="list-style-type: none"> gathering materials you need and keeping them with you | <ul style="list-style-type: none"> staying seated, facing forward keeping body and belongings inside the bus following the rules of your bus driver | |
| | To Others | <ul style="list-style-type: none"> using positive and appropriate language keeping hands and feet to self being a problem solver including everyone treating others as you wish to be treated | <ul style="list-style-type: none"> walking on the right side of the hall; single file, colored tile; respecting others’ personal space staying in your place in line | <ul style="list-style-type: none"> making all appropriate choices before going to cashier respecting choices of others socializing in a restaurant voice at your table | <ul style="list-style-type: none"> leaving area clean respecting the privacy of others | <ul style="list-style-type: none"> sitting in designated area until dismissal exiting the building as soon as possible looking both ways before entering the parking lot for parent pickup | <ul style="list-style-type: none"> walking on sidewalks only, staying to the right side waiting for adult signal to board or exit buses | <ul style="list-style-type: none"> showing appreciation by clapping sitting quietly |
| | To the Environment | <ul style="list-style-type: none"> respecting school and personal property disposing of trash returning borrowed items keeping voices down recycling keeping Smithton gum-free | <ul style="list-style-type: none"> behaving quietly in the hallway at all times keeping locker clean and items contained using water fountain appropriately | <ul style="list-style-type: none"> leaving area clean pushing in your chair making choices before touching food entering food area in small groups | <ul style="list-style-type: none"> leaving area clean keeping walls free of vandalism | <ul style="list-style-type: none"> Having appropriate pass when moving about the hallway | | <ul style="list-style-type: none"> keeping needed possessions with you |
| Are Ready To Learn | <ul style="list-style-type: none"> being on time having materials out and ready looking, listening and following directions | <ul style="list-style-type: none"> knowing where you are going and getting there quickly carrying a visible and signed pass | <ul style="list-style-type: none"> knowing your ID number or having your money ready | <ul style="list-style-type: none"> returning to class as quickly as possible | | | | |
| Are Responsible for their Actions | <ul style="list-style-type: none"> completing your homework and turning it in on time fessing up when you mess up asking for help until you it taking care of your belongings keeping PE, band and team lockers locked. | <ul style="list-style-type: none"> wiping your shoes before entering the building | <ul style="list-style-type: none"> buying only what you can eat during lunch keeping all food and beverages including flavored water in cafetorium Only plain water bottles may be taken out of cafetorium. | <ul style="list-style-type: none"> using the appropriate break times for restroom stops | <ul style="list-style-type: none"> saving food and beverages for lunch time using cell phones, iPods, MP3 and other electronic devices outside, after 3:10 | <ul style="list-style-type: none"> riding your bus only, unless you have permission to do otherwise | | |
| Reach for the Stars | <ul style="list-style-type: none"> Setting high goals and expectations for yourself Studying for success Doing your personal best | <ul style="list-style-type: none"> being courteous picking up posters/student work from the floor | <ul style="list-style-type: none"> inviting others to sit at your table greeting/thanking the cafeteria staff | <ul style="list-style-type: none"> reporting problems to an adult | | <ul style="list-style-type: none"> greeting/thanking the bus driver | | |

SMITHTON STUDENT ACTIVITIES LIST

| Activity | Sponsor |
|--------------------------|---|
| Sports | Ms. Ross |
| Band - 7th Grade Award | Hickman High (Audition Only) |
| Band - 6th Grade | Mrs. Randolph/Ms. Batye |
| Band - 6th Grade Honors | Rockbridge High |
| Bike Club | Ms. Company, Ms. Duncan, & Ms. Overshiner |
| Builders Club | Ms. N. Campbell & Ms. Stock |
| Choir - 6th | Mrs. Straw |
| Computer Lab | Various Teachers |
| Drama – Fall & Spring | Mrs. Drtina |
| Gaming Club | Ms. Townsend |
| Green Team | Ms. Company |
| Guided Study Program | Various Teachers & Counselors |
| MathCounts | TBA |
| Orchestra - Honors | Hickman High (Audition Only) |
| Orchestra - Intermediate | Hickman High (Audition Only) |
| Green Team | Mrs. Company |
| Reading Club | Ms. Townsend, Ms. McCarty, Ms. Burns, & Ms. Stock |
| Science Olympiad | Ms. Rohrs & Mrs. Tatlow |
| Smithton MAC Scholars | Ms. Campbell-Carter, Ms. Sheets & Ms. Pegg |
| Student Council | Mrs. Vandeloecht & Mrs. Pipes |
| U Matter | Ms. Beck & Counselors |
| Website Club | Mr. Hoover |
| Yearbook | TBD |

Smithton Middle School

Important Dates in 2010-2011

| | |
|----------------------------------|--|
| August 16th | 6th Grade Schedule Pickup - PTSA Welcome & Memberships |
| August 18th | 7th Grade Schedule Pickup - PTSA Welcome & Memberships |
| August 19th | <i>First Day of School</i> |
| September 6^h | Labor Day - NO SCHOOL |
| September 24th | Workshop/Planning Day District Teacher's Meeting-NO SCHOOL |
| October 20 | EARLY DISMISSAL |
| November 12 | Elementary/Middle Work Day -NO SCHOOL |
| November 24-26 | Thanksgiving Break - NO SCHOOL |
| Dec. 23 – Dec. 31 | Winter Recess - NO SCHOOL |
| January 17 | Martin Luther King's Birthday - NO SCHOOL |
| February 21 | PRESIDENT'S DAY-NO SCHOOL |
| February 11 | Elementary/Middle Work Day -NO SCHOOL |
| February 18 | Elementary/Middle Parent-Teacher Conferences - NO SCHOOL |
| March 28-April 1 | Spring Recess - NO SCHOOL |
| May 6 | Unused Snow Day - TBA |
| May 30 | Memorial Day – NO SCHOOL |
| June 1 | <i>Last Day of School</i> |

****This is a preliminary schedule.**

Note: Early Dismissal is 2 ½ hours before normal dismissal time.

History of Smithton Township
By Tyson Klemme
Smithton Class of 1996

In early November 1818, a group of thirty-five speculators (later styled "The Smithton Company") bought 2,720 acres in the center of that portion of Howard County bounded by Cedar Creek on the east and the Moniteau watercourse on the west. Their aim was to establish a town, which they hoped in the near future would become the seat of justice for this extensive area when it was split off from Howard County and organized as a new county.

The Smithton Company was an interstate syndicate, involving some of the largest speculators in the United States. An analysis of its roster reveals three main categories of stockholders. The St. Louis contingent consisted of Angus L. Langham, Deputy Surveyor General of public lands of Missouri and Illinois, and James S. Conway, nephew of General William Rector, who was associated with him in widespread land speculation.

The trustees designed a town, which they named Smithton. The sale of lots began in the spring of 1819 and a log house was constructed at Smithton the following fall. This was occupied by Colonel Gentry, who kept a tavern there and also acted as collector of payments for town lots.

The site occupied the elevated ground, half a mile west of the present courthouse in Columbia. It is owned and occupied as a residence, grounds, and pasture by Jefferson Girth. The marker, put up by the Daughters of the American Revolution and the state of Missouri in 1913 at McBaine and Broadway was well located. When Broadway was later widened, the marker was moved across the avenue to its present location at Broadway and East Parkway.

The town of Smithton, which was being used temporarily as the county seat, was rejected as the permanent administrative center because of a lack of an adequate supply of water. The commissioners took the basic Smithton town plan and moved it about one-half mile eastward. The new site, named Columbia, was adopted as the county seat on April 7, 1821. The sale of lots was scheduled to begin the third Monday in May 1821.

The Smithton Company gave to the city fifty acres of land in town lots, two public squares, \$2,000 in cash notes and two wells of constantly flowing water. To the county court, the company gave ten acres of ground in town lots, the sale proceeds that were to be used for the erection of bridges. The company also made a grant of ten acres to the court that is now Columbia College.