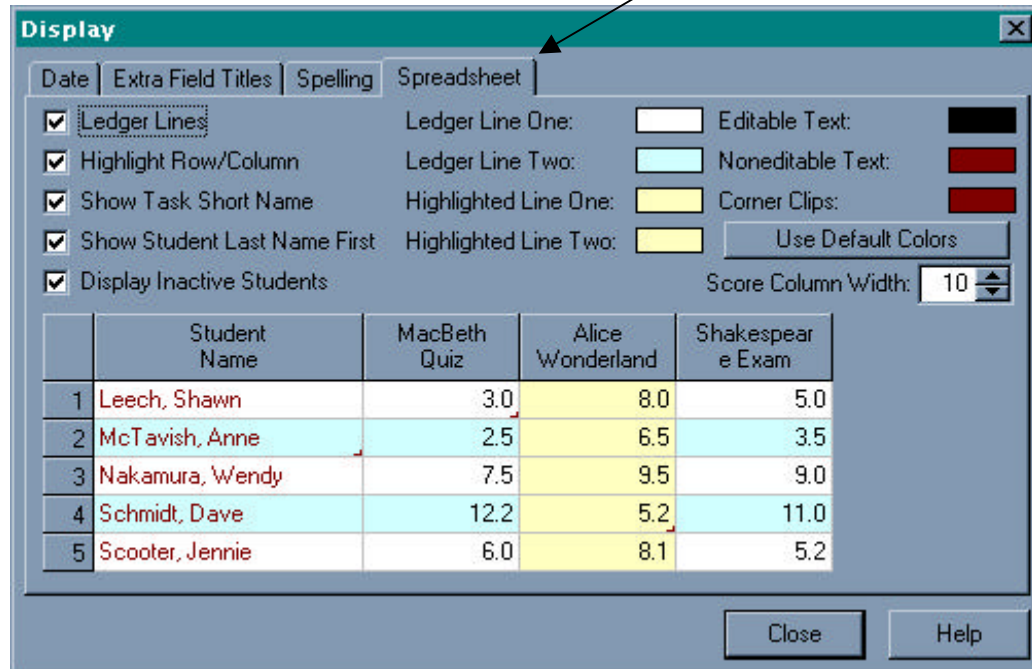


Changing the Colors on the InteGrade Pro Display

To change the grid colors on the InteGrade Pro screens, click on Setup, and select Display. From the display window, click on the Spreadsheet tab, as shown below:



Users may change the colors of the spreadsheet using the ledger line fields in the right top side of the window. Click on the colored rectangle to the right of ledger line one or two, and a color window will appear. Select the colors for the ledger lines, and click 'OK' when finished. To change the colors back to the default, click on the 'Use Default Colors' tab.